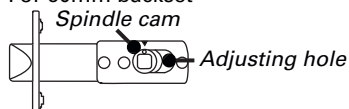


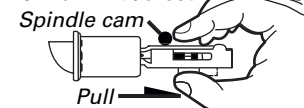
1 Deciding on backset

Select the correct backset. Backset is the distance between the centre of the 54mm hole (2-1/8") and the edge of the door, (either 60 or 70mm). Normally 60mm backset is used with lever furniture and 70mm for knob furniture.

For 60mm backset



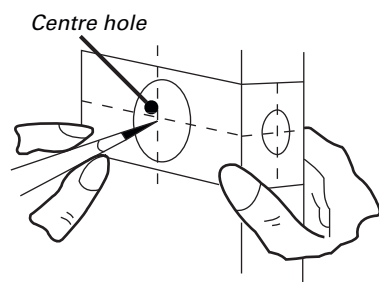
For 70mm backset



Pull spindle cam all the way to right edge of adjusting hole.

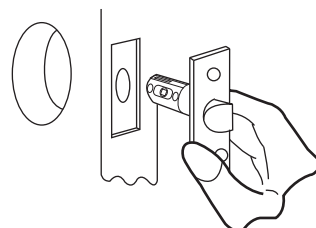
2 Mark position on door

Mark the centres for installing the lever and latch with the "DoorMarker" supplied. Make sure you use the correct backset 60mm (2-3/8") or 70mm (2-3/4") the same as the lock you purchased (backset is the distance between door hole centre and the door edge).



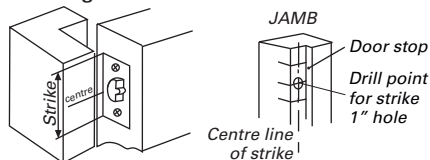
3 Bore two holes

With the determined points as centres, bore a 54mm (2-1/8") hole through the door squarely, then a 25mm (15/16") hole squarely in the door edge. Cut out the edge of the door so that the latch face can be flush into the door edge. Mount the latch with 2 screws provided.



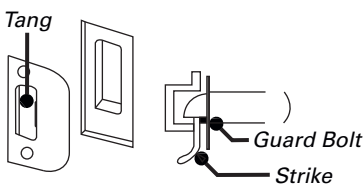
4 Strike position

Close door until latch touches jamb to locate strike in jamb and centre line of strike. Open door and extend line from mark to door stop. Measure one half of door thickness from door stop and vertically mark drill point centre for strike. Drill 25mm (1") latch hole in the frame 15mm (9/16") deep. Chisel 1.5mm (1/16") deep for the strike matching the 24mm (15/16") hole in door jamb. Insert and tighten screws.



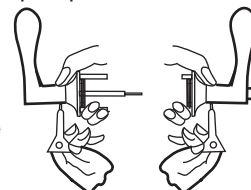
5 Install strike

When installing the strike plate, be sure it is set to the same height as the latch. The latch bolt should fit into the strike case, the small guard bolt (if present) should not go into the strike. Install the 2 screws provided. The adjustable tang permits bending in or out to eliminate excessive looseness between door and stop.



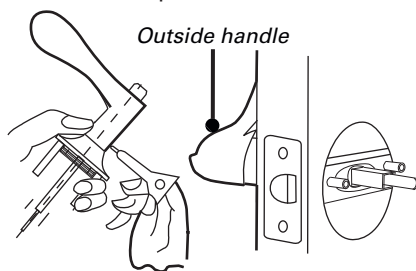
6 Change handing

Handing is reversible for straight levers (horizontal type), but the unhorizontal type lever may need to change handing (except for Passage function). The lock is preset for right-handing at factory. If yours is a left hand door, do the following to change the handing: For entrance set, make sure the handle is in the unlocked position before you press down on the retainer on the outside handle. Use the pin tip to press down the retainer on lever neck to remove both levers and change their sides.



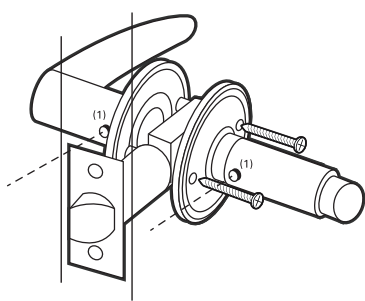
7 Install outside lever

Pull off the inside lever by using the tip of the pin supplied to press down the retainer on the neck of the lever. Remove the rose. Install the inner rose assembly and tighten with two machine screws (be sure that the retainer should be on the door edge side when installed). Then snap on the rose.



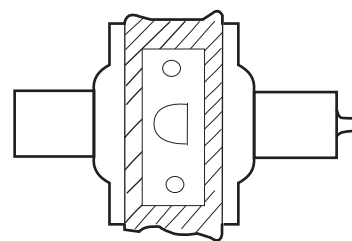
8 Install inside lever

Making sure to align the handle retainer buttons to the door edge (1) install the inner rose assembly and tighten with two machine screws **DO NOT OVER TIGHTEN OR DAMAGE MAY OCCUR TO THE INNER ROSE** Snap on the outer rose.

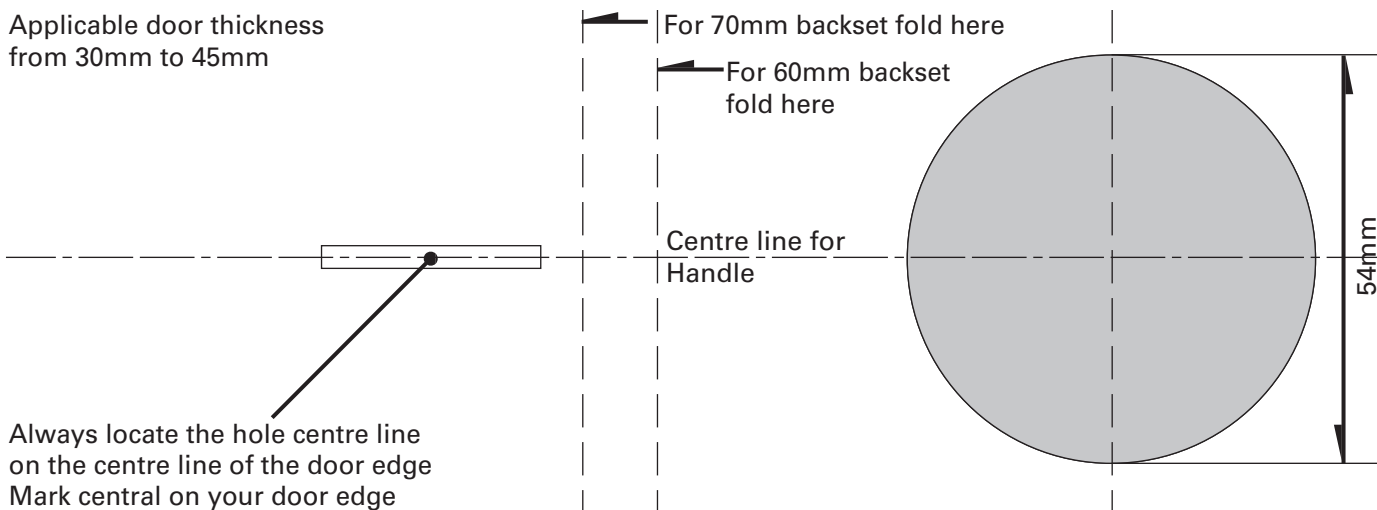


9 Opening test

To check if the installation is correct, just insert the key and turn to unlock and lock. Turn both exterior and interior trims to ensure they retract the latch correctly.

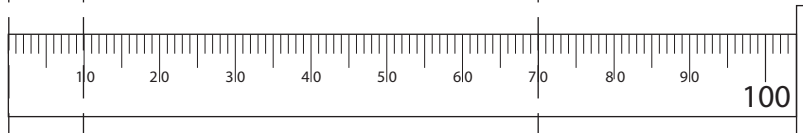


Applicable door thickness from 30mm to 45mm



Always locate the hole centre line on the centre line of the door edge Mark central on your door edge

PLEASE NOTE: If re-printing this template, ensure you print 1:1 ratio, and double check the drilling template with an accurate ruler



A For remodeling or new construction

Tools required:
1 Phillips head screwdriver
1 54mm (2-1/8") hole saw
1 25,4mm (1") drill
1 chisel

Follow steps 1 through to 11.

B For replacement

Tool required:
1 Phillips head screwdriver

Follow step 7 onwards for do-it-yourself replacement after removal of existing bolts.

C Before replacing existing dead bolts

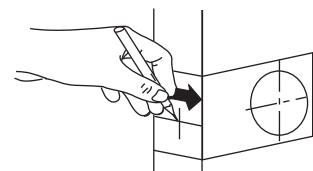
First measure from centre of lock to door edge in order to check length of backset on existing lock to that of new lock.
Adjust the bolt by twisting 45 degrees and pull bolt to 70mm position or push bolt to 60mm position and reverse the twist.
The bolt should match the backset you require.
Then check door thickness.
Please note the door thickness range specified on the package.

Dead Bolt

Installation Instructions

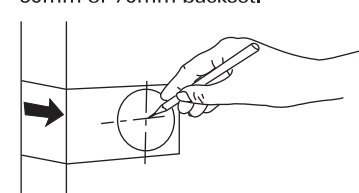
1 Mark bolt hole

Fold and apply template to high edge of the door bevel and mark centre of door edge on template at the desired height from the floor.



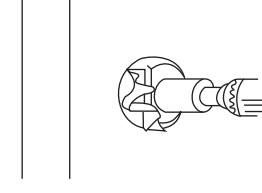
2 Decide on backset/mark door hole

The backset is the distance between the edge of the door and the centre of the dead bolt.
Mark centre hole on door face through guide on template for either 60mm or 70mm backset.



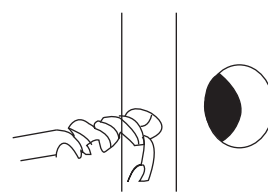
3 Drill door hole

Drill through door face as marked for lockset. It is recommended that holes be drilled from both sides to prevent splitting. Hole size is 54mm (2-1/8") for standard installations.



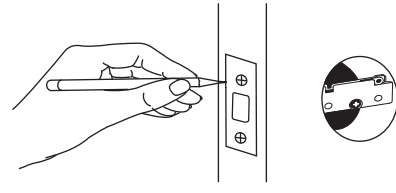
4 Drill bolt hole

Mark centre hole on door edge using guide on template. Drill 25mm (1") hole to connect with lock hole.



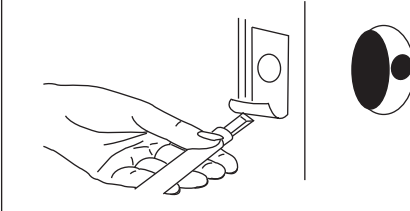
5 Mark bolt front

Insert bolt in hole, keeping it parallel to face of door. Mark outline and remove bolt.



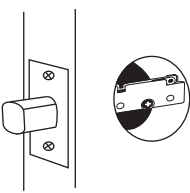
6 Make front seat

Chisel 3mm (1/8") deep or until bolt face is flush with door edge.



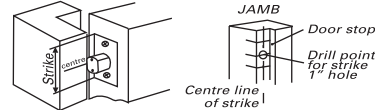
7 Install bolt

Install dead bolt latch in "up" position into hole as shown on bolt. Insert and tighten screws.



8 Install strike

Close door until extended bolt touches jamb to locate strike in jamb and centre line of strike. Open door and extend line from mark to door stop. Measure one half of door thickness from door stop and vertically mark drill point centre for strike. Drill 24mm (15/16") bolt hole in the frame at least 25mm (1") deep. Chisel 1,5mm (1/16") deep for the strike matching the 24mm (15/16") hole in door jamb. Insert and tighten screws.



9 BEFORE INSTALLING CYLINDER, RETRACT BOLT COMPLETELY USING SCREWDRIVER.

Install outside cylinder

Connecting bar should be vertically inserted into bolt hub.



Press outside cylinder against door, making certain the connecting bar is properly positioned in bolt hub. Tapped holes in exterior cylinder should be lined up with bolt holes. Key hole should be in the down position.

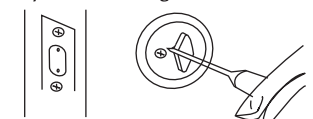


10 For single cylinder

Slide thumb turn and interior rose on to connecting bar.



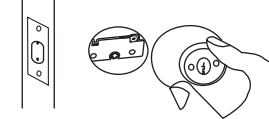
Insert two screws through rose holes and engaging holes in cylinder and tighten.



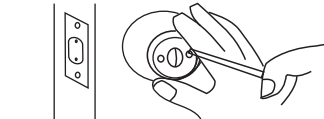
11 For double cylinder

NOTE:
The inside cylinder connecting bar is to be interconnected with the outside connecting bar.

Press inside assembly flush against door making certain the connecting bar is properly positioned in the bolt hole.



Insert two screws through the two countersunk holes on the inside cylinder, though the two holes on the bolt, then further engage into the holes in exterior cylinder and tighten securely.



Fixing Instructions

Residential Door Hardware Warranty

Sylvan residential door hardware products are covered by the following warranty.

- * 7 year mechanical.
- * 3 year finish (see exclusions below).

Subject to the following conditions:

If a finish or mechanical defect occurs within the warranty period, simply return the product together with proof of purchase to the point of purchase. Upon receipt of defective product it will be either repaired or replaced free of charge. This warranty only applies to the original user of the product, and is non transferable.

The Sylvan residential door hardware warranty excludes the following:

- Indirect or consequential loss or damage
- Cost of removal and or replacement
- Cost of freight and or travel time
- Improper installation or failure to follow fitting instructions
- Abuse or misuse of the product
- Use of the product for the purpose which the product was not designed
- Scratches from keys/rings, abrasions or deterioration due to use of paint, solvents or other chemicals
- Use of the product in exposed coastal or geothermal conditions
- The plated finishes of Polish Brass and Black Nickel are classified as soft finishes. As deterioration is possible under some climatic conditions, these finishes are excluded from this warranty.

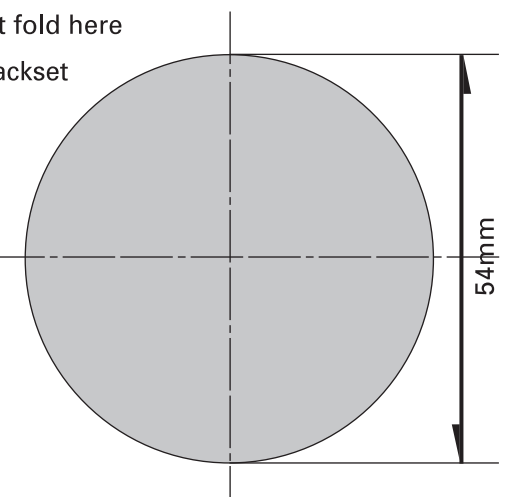
Warranty

Single cylinder fits door thickness 35-50mm
Double cylinder fits door thickness 35-45mm

For 70mm backset fold here
For 60mm backset fold here

Always locate the hole central to the doors thickness

Centre line for Knob/Handle



Installation Template