



## Satin Brass Range

### All In One - Passage & Privacy Options

SS Bearing Race Mechanism

63mm Backplate for Retro Fitting Into Existing Doors

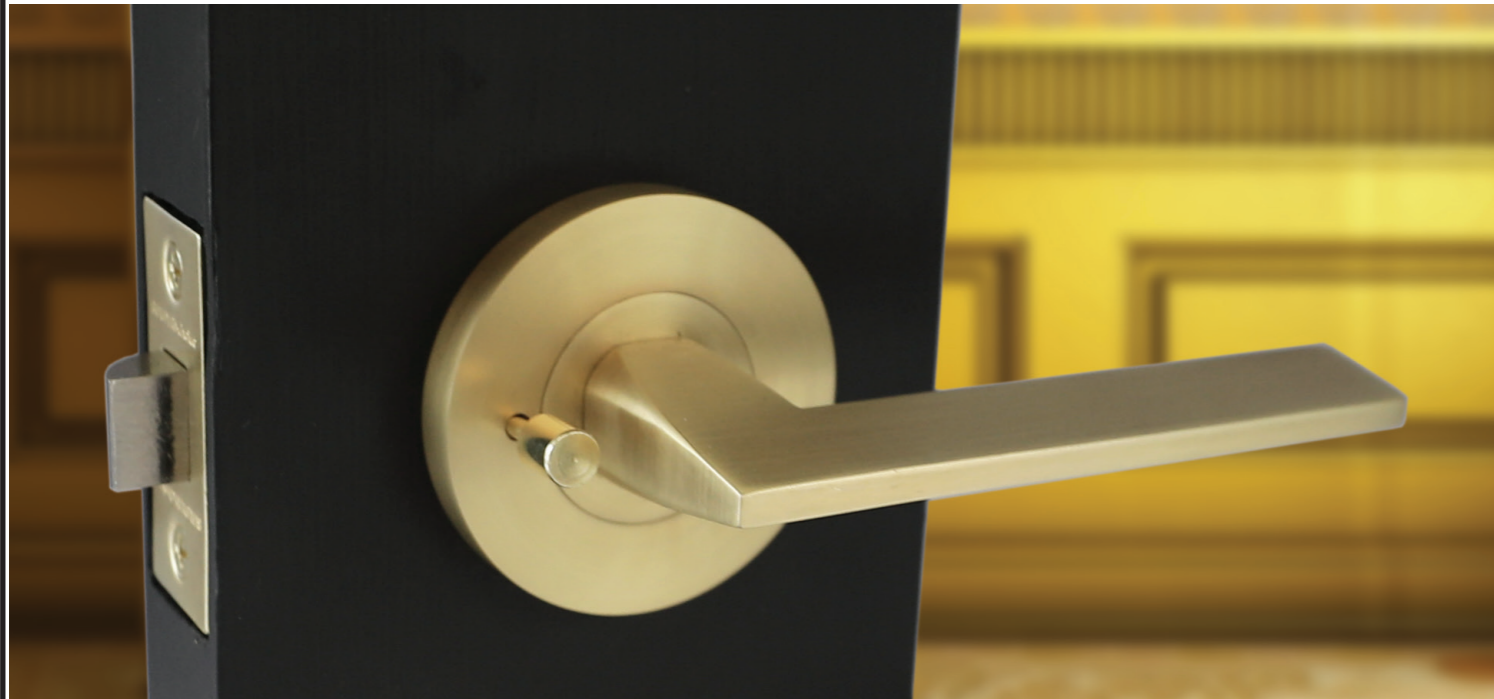
Back to Back SS Screw Thru Fixing



INTEGRATED  
PRIVACY OPTION



304 SS BALL BEARING  
RACE MECHANISM



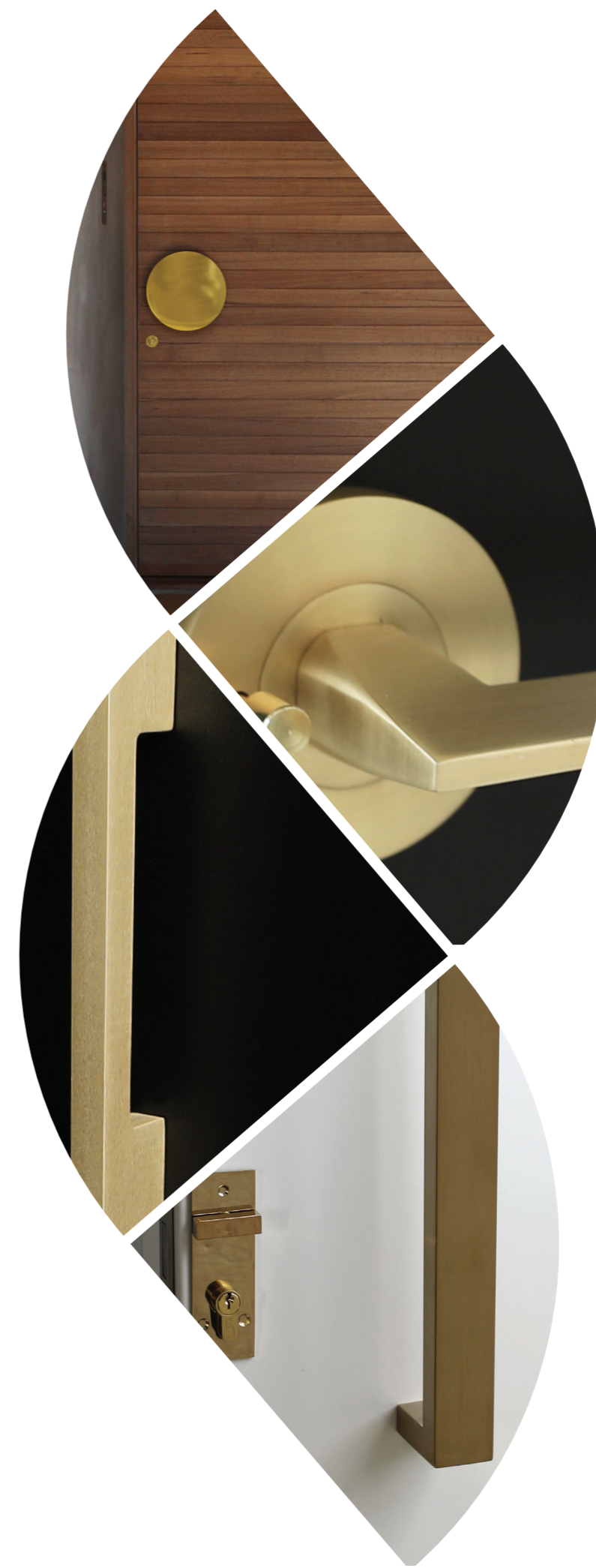
# SB

w. [www.austyle.com.au](http://www.austyle.com.au)  
e: [info@austyle.com.au](mailto:info@austyle.com.au)  
p: 03 9553 3559



austyle  
architectural  
hardware

2021



# SB

Satin Brass Range

# Satin Brass Finish



**93580 Linear Lever Set.**  
 >SS Ball Bearing Mechanism.  
 >ALL IN ONE - Passage & Privacy options included.  
 >63mm backplates -Ideal for retro fitting into existing doors.

93733 **Escutcheon** Cover 52mm  
 99209 **Entrance Lock** 65mm/85mm  
 19144 **Double Cylinder** 65mm (PVD)

**Tapered Lever Set**  
 All In One - Passage and Privacy (pictured)  
 93585

**93585 Tapered Lever Set**  
 SS Ball Bearing Mechanism  
 ALL IN ONE - Passage & Privacy options included  
 63mm backplates -Ideal for retro fitting into existing doors

**Blade Entry Pull Handle**  
 93936  
 Blade Pull Handle  
 450mm (40x15mm)

**Square Entry Pull Handle**  
 93995  
 450mm (20x40mm)  
 93996  
 600mm (20x40mm)  
 93736  
 Escutcheon Snib  
 145x40mm  
 19217  
 myLOCK  
 Entrance Roller  
 Lock

**Circular Entry Pull Handle**  
 93994  
 230mm Diameter  
 Round Pull  
 93702  
 Escutcheon

**Sliding Door Flush Pull**  
 93749  
 Flush Pull 150x50mm.

**Sliding Door Edge Pull**  
 94455 - 80x25mm.

**Bathroom Doors**  
 99040  
 Recessed bathroom privacy snibs 40mm diam (use with 19033 latch)

**Door Stop**  
 93080  
 Floor Mounted Door Stop 45mm

**Hinges**  
 95108  
 100x75x2.5mm  
 Fixed Pin  
 95109  
 100x100x2.5mm  
 Fixed Pin

**Entrance Option**  
 93580 Lever Handle  
 93733 Escutcheon Cover 52mm  
 99209 Entrance Lock 65mm/85mm  
 19144 Double Cylinder 65mm (PVD)

**Tube Entry Pull Handle**  
 93866  
 25mm Tube  
 450mm  
 93868  
 32mm Tube  
 600mm

**Tapered Offset Entry Pull Handle**  
 93928  
 450mm Tapered Offset Pull  
 93929  
 600mm Tapered Offset Pull

**Cabinet Pull Handle**  
 98702  
 12x12mmx236mm