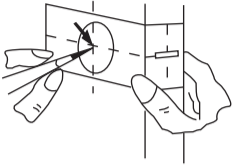


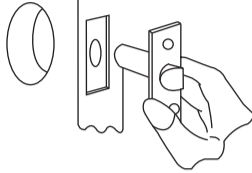
1 Mark door

Mark the centres for installing the lock and latch with the "Door Marker" supplied. Make sure you use the correct backset 2-3/8" (60mm), 2-3/4" (70mm) the same as the lock you purchased (backset is the distance between door hole centre and the door edge).



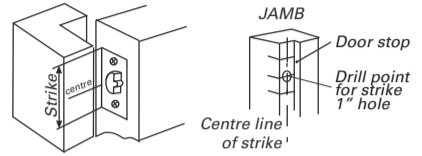
2 Bore two holes

With the determined points as centres, bore a 2-1/8" (54mm) hole in the door face, then a 15/16" (24mm) hole in the door edge. Cut out the edge of the door so that the latch face can be flush into the door edge. Mount the latch with 2 screws provided. Note: With adjustable latch, the latch hole diameter should be 1" (25mm).



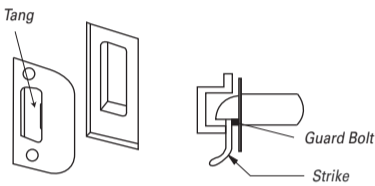
3 Strike positioning

Close door until latch touches jamb to locate strike in jamb and centre line of strike. Open door and extend line from mark to door stop. Measure one half of door thickness from door stop and vertically mark drill point centre for strike. Drill 15/16" (24mm) latch hole in the frame 9/16" (15mm) deep. Chisel 1/16" (1.5mm) deep for the strike matching the 15/16" (24mm) hole in door jamb. Insert and tighten screws.



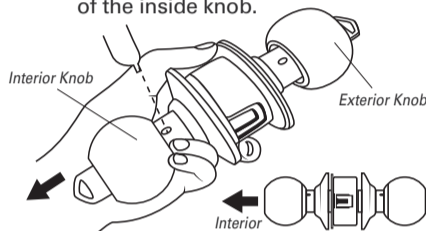
4 Install strike

When installing the strike plate, be sure it is set to the same height as the latch. The latch bolt should fit into the strike case, the small guard bolt (if present) should not go into the strike. Install the 2 screws provided. The adjustable tang permits bending in or out to eliminate excessive looseness between door and stop.



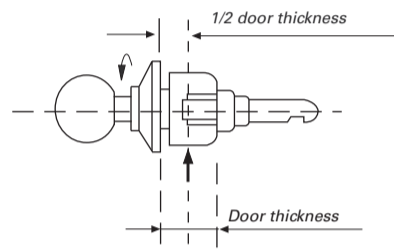
5 Remove inside knob

Only release the inside knob. To remove, in the unlocked state; rotate the knob slightly to expose the retainer. Using the tip of the pin supplied, press down the retainer located inside the small hole. The hole is located on the neck of the inside knob.



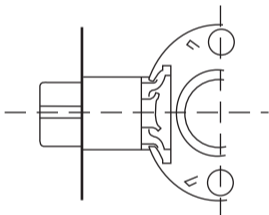
6 Adjust to required door thickness

Adjust the lock to fit the door by turning the outside rose to 1/2 the door thickness.



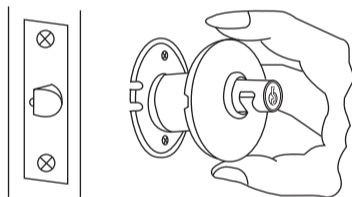
7 Install outside knob

Install latch in edge of door and make sure latch bevel is correct for the hand (closing) of the door. Secure latch with 2 screws provided. Install lock from outside face of door and be sure lock housing engages with latch prongs and retractor interlocks with latch bar.



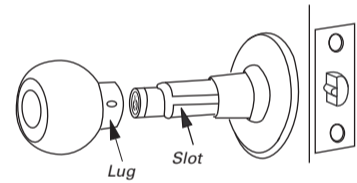
8 Install Interior rose

Place the inside rose into the lock body and tighten with the 2 machine screws provided. Then turn in the outside rose tight against the door.



9 Install inside knob

Align lug on knob with narrow slot on side of spindle and push knob all the way in until retainer clicks into slot on knob.



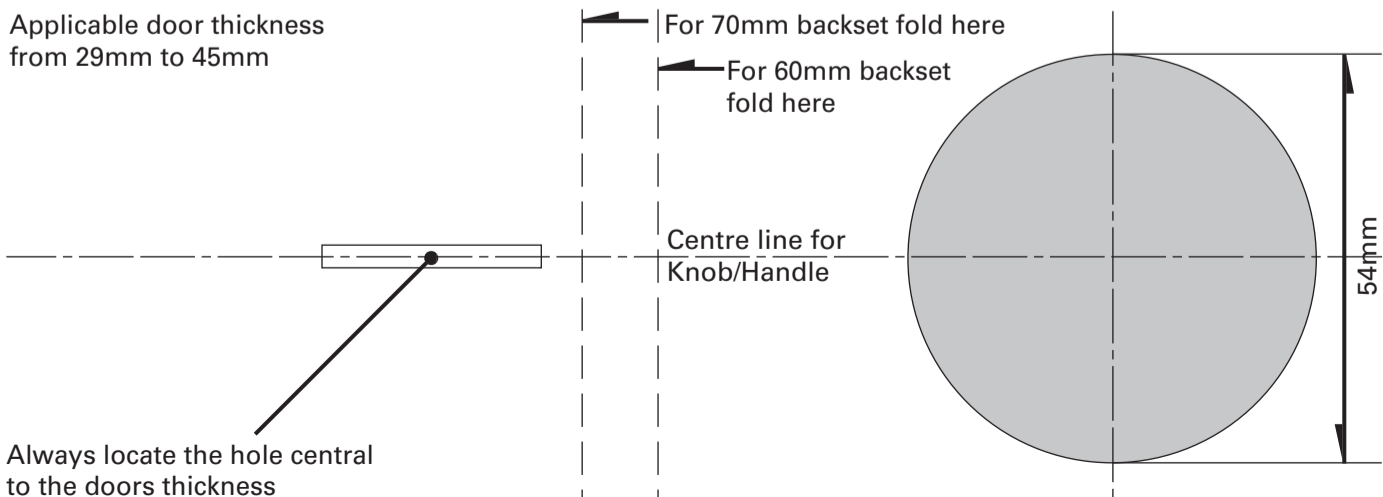
Residential Door Hardware Warranty

Sylvan residential door hardware products are covered by the following warranty.
 * 10 year mechanical.
 * 5 year finish (see exclusions below).

Subject to the following conditions:
 If a finish or mechanical defect occurs within the warranty period, simply return the product together with proof of purchase to the point of purchase. Upon receipt of defective product it will be either repaired or replaced free of charge. This warranty only applies to the original user of the product, and is non transferable.

The Sylvan residential door hardware warranty excludes the following:
 Indirect or consequential loss or damage
 • Cost of removal and or replacement
 • Cost of freight and or travel time
 • Improper installation or failure to follow fitting instructions
 • Abuse or misuse of the product
 • Use of the product for the purpose which the product was not designed
 • Scratches from keys/rings, abrasions or deterioration due to use of paint, solvents or other chemicals
 • Use of the product in exposed coastal or geothermal conditions
 • The plated finishes of Polish Brass and Black Nickel are classified as soft finishes.
 As deterioration is possible under some climatic conditions, these finishes are excluded from this warranty.

Applicable door thickness from 29mm to 45mm



Always locate the hole central to the doors thickness