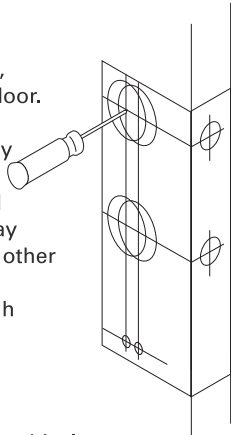


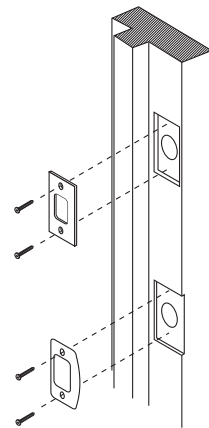
## 1 New Door Preparation

1. Fold template as marked and place on door. If corner of door is bevelled, placed templated on widest side of door.
2. Mark centres for all holes. Drill 3mm pilot holes at centres. Drill completely through door thickness.
3. Drill 1 x 54mm hole for deadbolt and 1 x 51mm hole for handleset, half way through door. Finish drill holes from other side of door to prevent splintering.
4. Bore two 25mm holes central through front of door face to accept the latch and bolt.
5. Bore 9mm hole to receive bottom portion of handleset.
6. Trace outlines of latchplates. Carefully chisel away outlined areas until plates fit flush. Drill pilot holes for plate mounting screws.



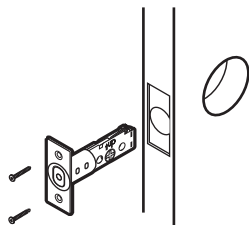
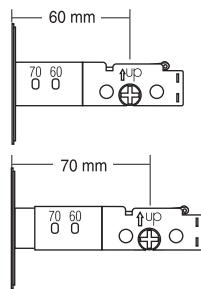
## 2 Strike Plate Installation

1. To prepare door frame for strike plates, close the prepared door and mark where latch holes line up on the frame.
2. Trace outlines of strike plates. Carefully chisel away outlined areas until plates fit flush.
3. With a 25mm drill bit, drill a 25mm deep hole at the upper strike plate to accept the bolt.
4. With a 25mm drill bit, drill a 13mm deep hole at the lower strike plate to accept the latch bolt.
5. Drill pilot holes for plate mounting screws.
6. Secure strike plates with four 19mm screws.



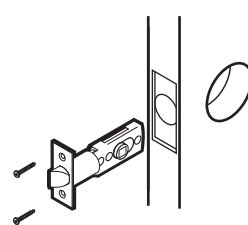
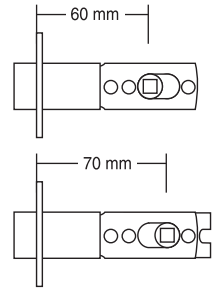
## 3 Install Deadbolt

1. Deadbolt Adjustment  
Note: when adjusting the deadbolt, always have the bolt end in retracted position (so bolt end is flush with bolt face). Bolt is preset to a backset distance of 60mm. If the 70mm distance is needed, adjust the bolt by twisting the bolt barrel 45 degrees, pulling bolt apart and reversing the twist until the tab snaps into the "70" slot.
2. Deadbolt Installation  
Insert bolt through the top hole in door edge and screw in place using two of the 19mm Phillips head screws. There is an arrow on back part of bolt. Install with arrow pointing up. Screw and tighten, so bolt sits flush against front door face.



## 4 Install Handleset Latch

1. Handleset Latch Selection  
Latch is preset to a backset distance of 60mm. Follow these steps if the 70mm distance is needed. Hold latch face in one hand and pull hub away from the face. Only the front post and square spindle engage in the latch; the rear post does not. The latch backset should now be set to 70mm.
2. Latch Installation: Insert latch through the bottom 25mm hole in door edge and screw in place using two of the 19mm Phillips head screws. Curved edge of latch bolt should face in direction that door closes. Ensure latch forend sits flush against door face.



## 5 Install Handleset Outside Cylinder

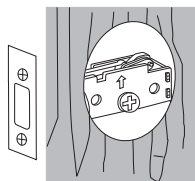
Correct key position



Incorrect key position

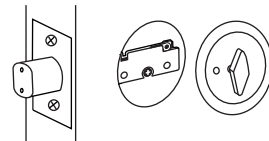


With the deadbolt in retracted position, slide cylinder and cylinder housing through from the outside face of the door through the deadbolt hole. Please note that the key hole should be in the down position.

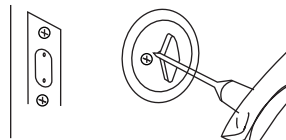


## 6 Install Thumb Turn

Slide thumb turn and interior rose on to connecting bar.



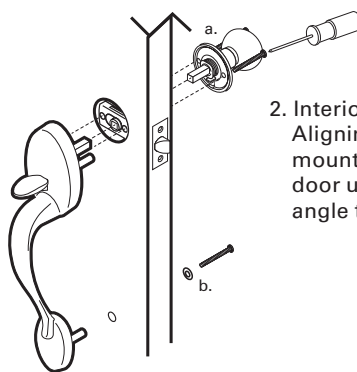
Insert two screws through rose holes and tighten against cylinder. Check operation of deadbolt to ensure it is operating correctly and check that the key pulls out when in unlocked and locked position.



## 7 Handleset Installation

### 1. Exterior Assembly

Insert exterior assembly through bottom 51mm hole in door, ensuring that the square spindle passes through the latch hub, the screw posts pass through the two adjacent holes in the latch body, and bottom screw post passes through 9mm hole in door. Secure bottom by inserting a satin chrome finish bolt through the satin chrome finish washer and tightening (b).



### 2. Interior Assembly

Aligning the square spindle onto the latch, mount the interior chassis assembly (a) to the door using 2x machine screws. You will need to angle the screw driver slightly to clear the knob.

## Residential Door Hardware Warranty

Sylvan residential door hardware products are covered by the following warranty.

\* 10 year mechanical.

\* 7.5 year finish (see exclusions below).

Subject to the following conditions:

If a finish or mechanical defect occurs within the warranty period, simply return the product together with proof of purchase to the point of purchase. Upon receipt of defective product it will be either repaired or replaced free of charge. This warranty only applies to the original user of the product, and is non transferable.

The Sylvan residential door hardware warranty excludes the following:

Indirect or consequential loss or damage • Cost of removal and or replacement • Cost of freight and or travel time • Improper installation or failure to follow fitting instructions • Abuse or misuse of the product • Use of the product for the purpose which the product was not designed • Scratches from keys/rings, abrasions or deterioration due to use of paint, solvents or other chemicals • Use of the product in exposed coastal or geothermal conditions • The plated finishes of Polish Brass and Black Nickel are classified as soft finishes. As deterioration is possible under some climatic conditions, these finishes are excluded from this warranty.