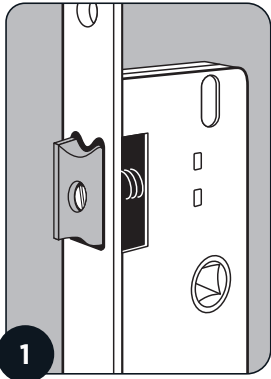


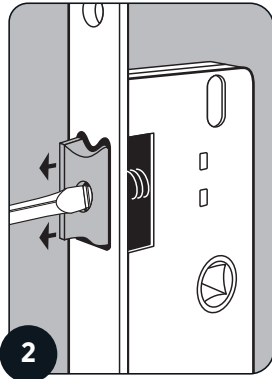
726 MORTICE LOCK HANDING REVERSAL



1

CHECK HANDING

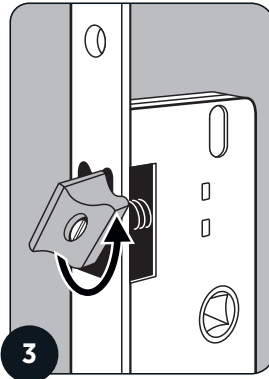
Determine if handing direction is correct for the door installation. If reversal is needed follow these steps to reverse handing direction.



2

RELEASE LATCH

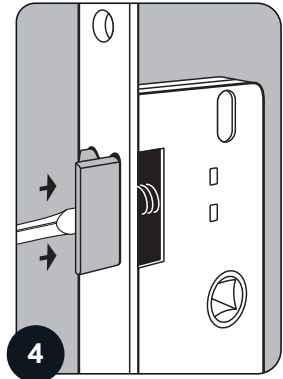
Loosen screw clockwise in the front of the lock body located in line with the latch, this will extend the latch past the lock face,



3

REVERSE LATCH

With the latch protruding past the lock face, turn the latch 180 degrees and reseal the latch into the lock face.



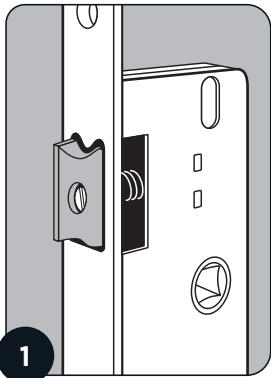
4

SECURE LATCH

Tighten screw anti clockwise in the front of the lock body this will push the latch back into to the lock body securing the latch.

Handing Reversal

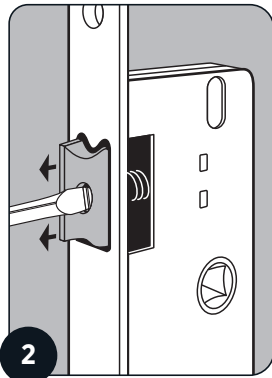
726 MORTICE LOCK HANDING REVERSAL



1

CHECK HANDING

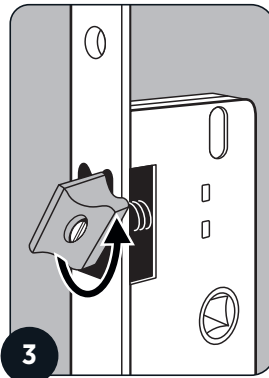
Determine if handing direction is correct for the door installation. If reversal is needed follow these steps to reverse handing direction.



2

RELEASE LATCH

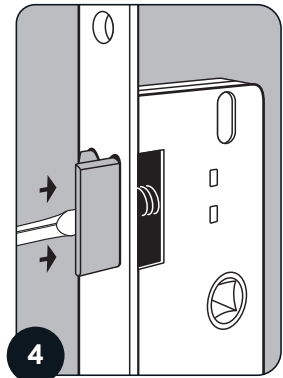
Loosen screw clockwise in the front of the lock body located in line with the latch, this will extend the latch past the lock face,



3

REVERSE LATCH

With the latch protruding past the lock face, turn the latch 180 degrees and reseal the latch into the lock face.



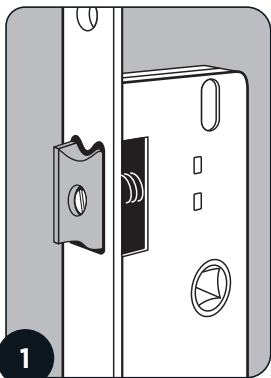
4

SECURE LATCH

Tighten screw anti clockwise in the front of the lock body this will push the latch back into to the lock body securing the latch.

Handing Reversal

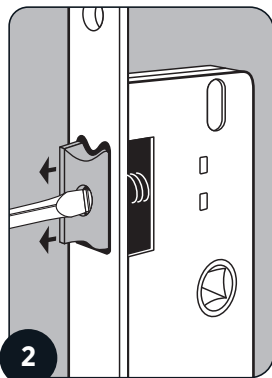
726 MORTICE LOCK HANDING REVERSAL



1

CHECK HANDING

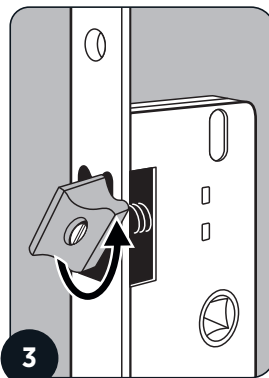
Determine if handing direction is correct for the door installation. If reversal is needed follow these steps to reverse handing direction.



2

RELEASE LATCH

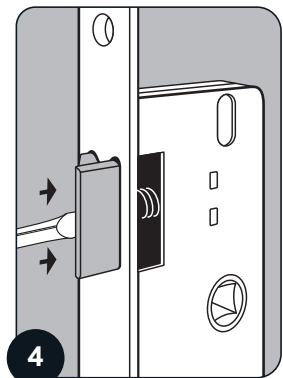
Loosen screw clockwise in the front of the lock body located in line with the latch, this will extend the latch past the lock face,



3

REVERSE LATCH

With the latch protruding past the lock face, turn the latch 180 degrees and reseal the latch into the lock face.



4

SECURE LATCH

Tighten screw anti clockwise in the front of the lock body this will push the latch back into to the lock body securing the latch.

Handing Reversal