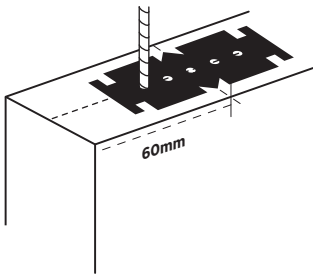




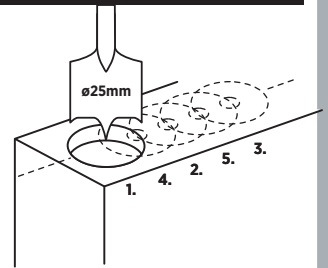
1 Mark door magnet

Measure and mark a centerline on top of the door and mark a backset approx 60mm from the door edge place and align the drilling guide and using the holes, drill 5x Ø3mm pilot holes through the template into the centerline.



2 Drill door magnet holes

Using the 5x Ø3mm pilot holes as a guide, bore 5x overlapping holes with a Ø25mm spade bit to a depth of approx 4mm. in the order 1. 2. 3. 4. 5.

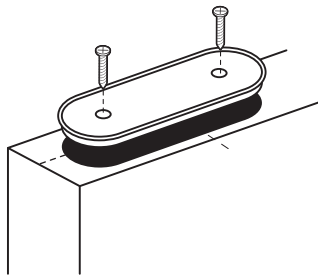


I4 Use the 'Drilling depth guide' feature on the template to check correct 4mm hole depth.

3 Fit door magnet

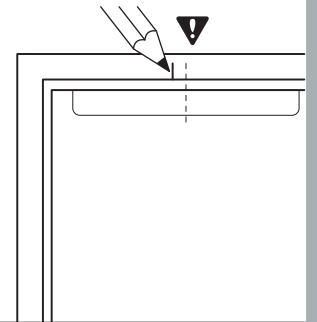
6. Insert DOOR MAGNETIC ASSEMBLY into top of door and secure with 2 x screws provided.

Be careful not to over tighten screws as this may cause the flanged housing cups to deform and/or cracking in timber.



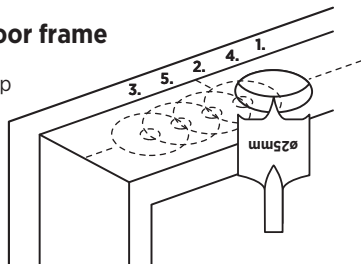
4 Mark door frame magnet

Place the door in the closed position and mark the center of the door magnet on the door frame. Then mark your **Center hole for the door frame magnet, this should be offset 1-3mm inwards towards the frame** to allow the magnets to pull together. (see diagram below)



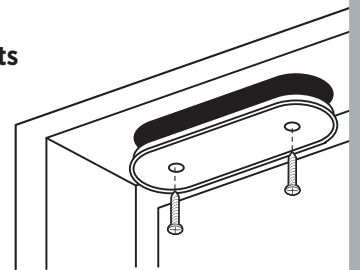
5 Mark and Drill door frame

Using the same process as step 1, mark and drill the door frame holes drilling an 8mm deep recess using the drilling template as a guide.



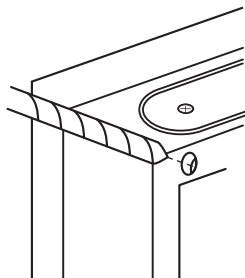
6 Fit door frame magnets

Place magnet housing cup into pre-drilled hole, install any magnet strength packers that are required, followed by the magnets and secure with screws.



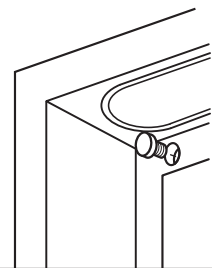
5 Drill rubber buffer hole

Using a 5mm drill bit, drill a hole in the door jamb.



6 Fit rubber buffer

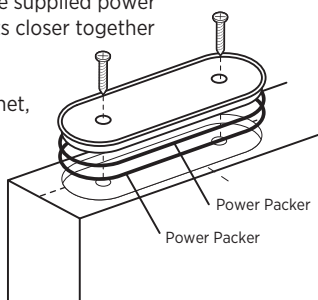
Push rubber buffer into the pre-drilled hole, this should be a tight fit, to finish, install self adhesive covers over the door and frame magnets.



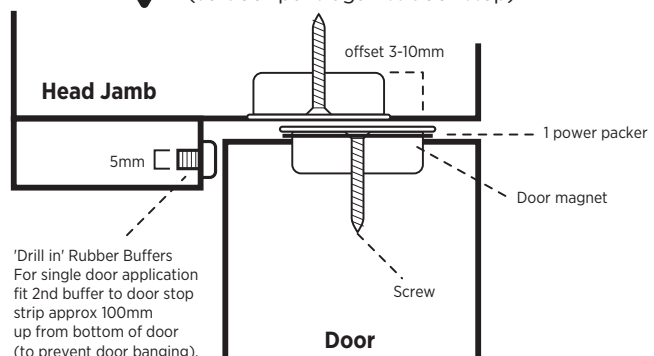
7 Install Power Packers (if required)

Once you have finished installation, if the magnet strength is weak, you can install the supplied power packers. This will bring the magnets closer together and increase the power.

To install, unscrew the DOOR magnet, slip on the desired amount of packers and reinstall the door magnet, repeat this process until you are happy with the strength of the door closing.



Top magnet must be offset towards doorstop.
(so door pulls against door stop)



'Drill in' Rubber Buffers
For single door application
fit 2nd buffer to door stop
strip approx 100mm
up from bottom of door
(to prevent door banging).