

# SL45E

## USER MANUAL - SMART KEYBOX



Scan QR Code to  
download the app

Download on the  
**App Store**



GET IT ON  
**Google Play**



Bluetooth



Fingerprint



Password



RFID Tag



Key



App



Smart Hub<sup>®</sup>

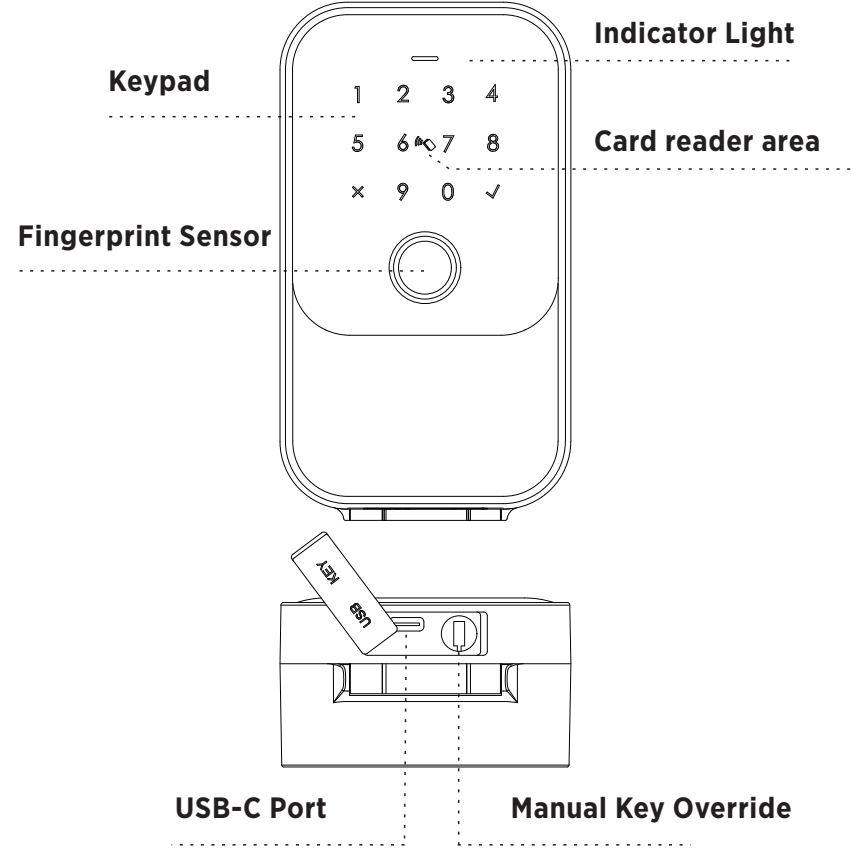
**WARRANTY\***



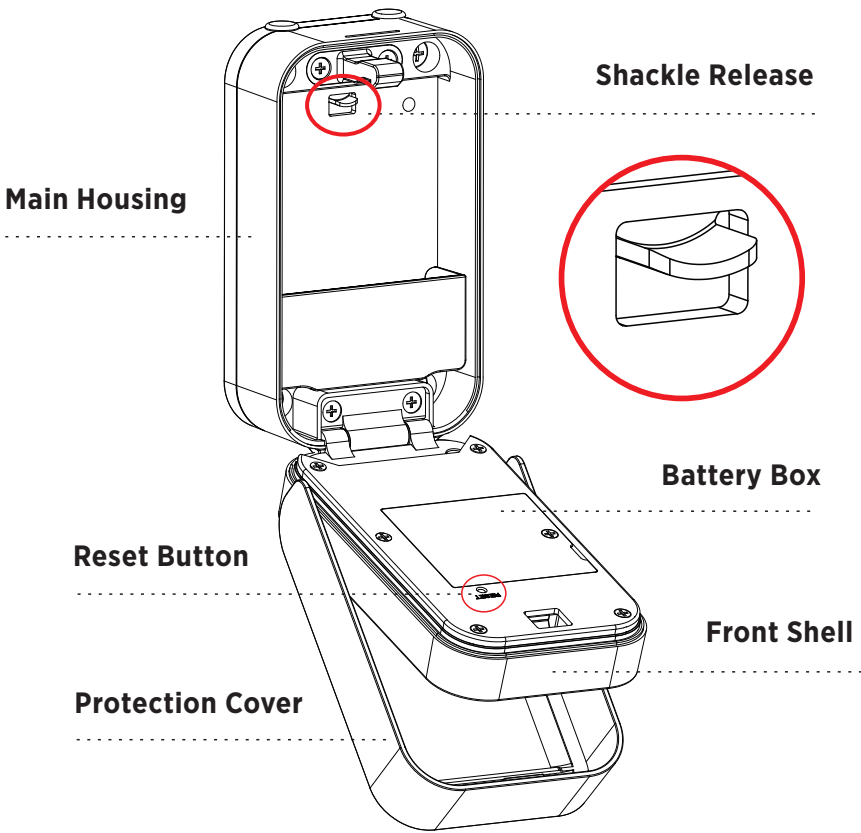
# SL45E Packing List

			
KeyPad Qty x1	Manual Key Qty x2	Wood Screw 4x30mm x4	Wall Plug 6x30mm x4
			
RFID Tag Qty x1	Manual Qty x1	USB-C CABLE Qty x1	Shackle Qty x1

# Product specification Front:



# Product specification Inside:



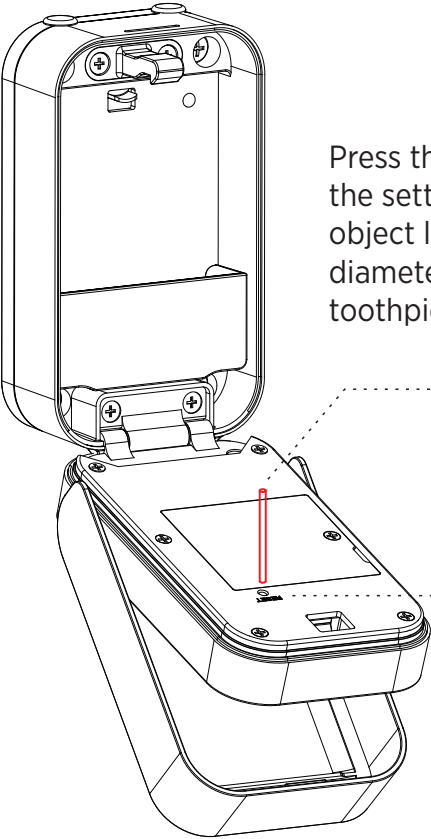
# System

Main material	Aluminum alloy,zinc alloy, tempered glass
Available Color	Black
Installation Type	Wall mounting or work with knob lock by shackle
Communication	BLE5.0
Support OS	iOS 7.0 or above, Android 4.3 or above
Battery Life	5000 times normal unlock(10-12 months)
Power Supply	DC6V:4pcs AAA alkaline batteries
Static Current	≤80uA
Dynamic Current	≤200mA
Unlock Way	APP,Passcode,Card,Manual key,Fingerprint(optional)
Unlock Time	1~1.5 seconds
Working Temperature	-20~55 degree
Working Humidity	20%~95%
Factory Password	Factory master password:123456, after configuration,it will be invalid
Virtual Password	Available
IP Level	IP65 Certified
User Capacity	Fingerprint: 100; Passcode: 250 and Card: 1000.

**Note: We do not recommend using rechargeable or lithium batteries as damage caused will void the warranty**

**Only use high quality alkaline batteries, suitable for high drain devices such as Energizer Max Plus**

# Factory Reset



Press the setting key through the setting hole with a thin object less than 2.5mm in diameter. (e.g. paperclip or toothpick)



**Reset Button**

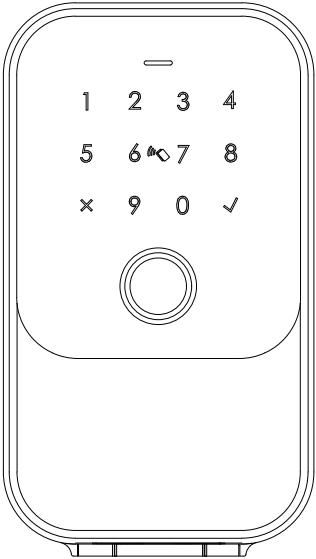
# Factory Reset

There is a reset button on the back of the front shell; After the device is powered on, long press the button for 3 seconds, and the voice prompts “Please enter the initialization passcode (000✓)”;

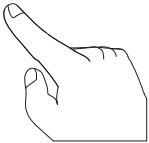
If the passcode is successfully entered, there is sound tip “Delete Administrator successfully”.

Then default master password is 123456.

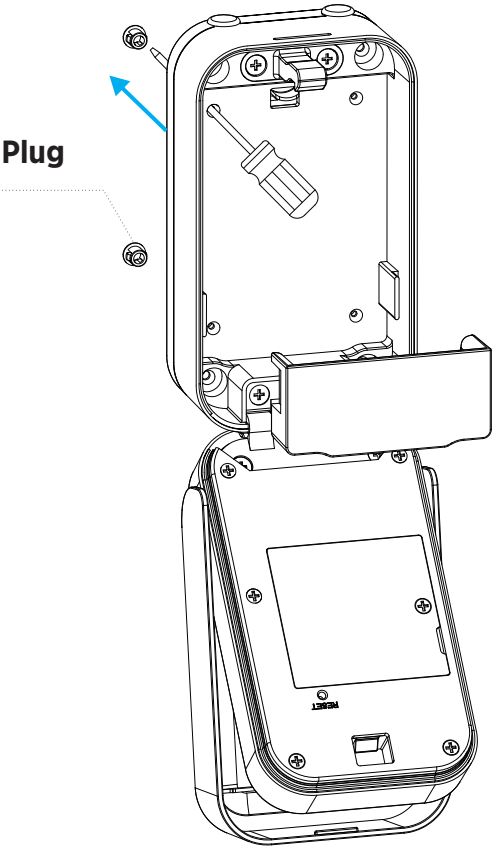
Please enter the passcode to unlock the key box.



Factory State:  
Default password:  
**123456✓** to unlock



# 5: Installation: Wall Mount - Masonry

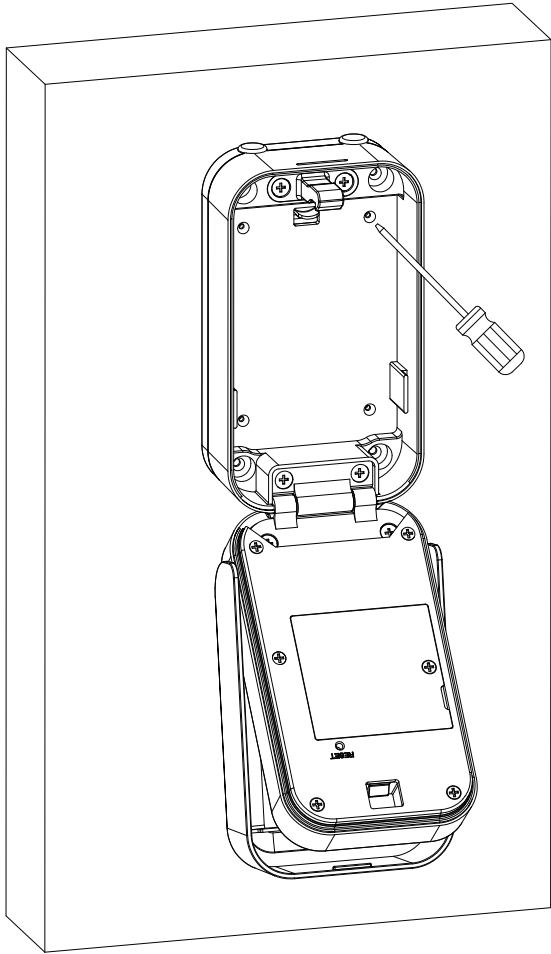


Fixed on the wall,  
the line must be at a  
suitable height from  
the ground.

## 5.1 Masonry

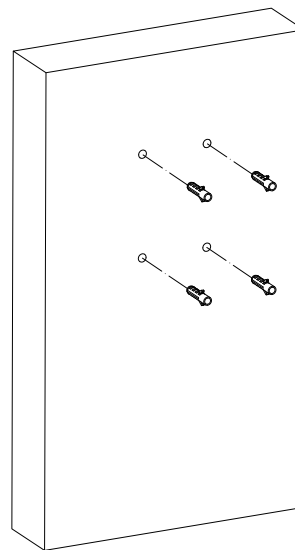
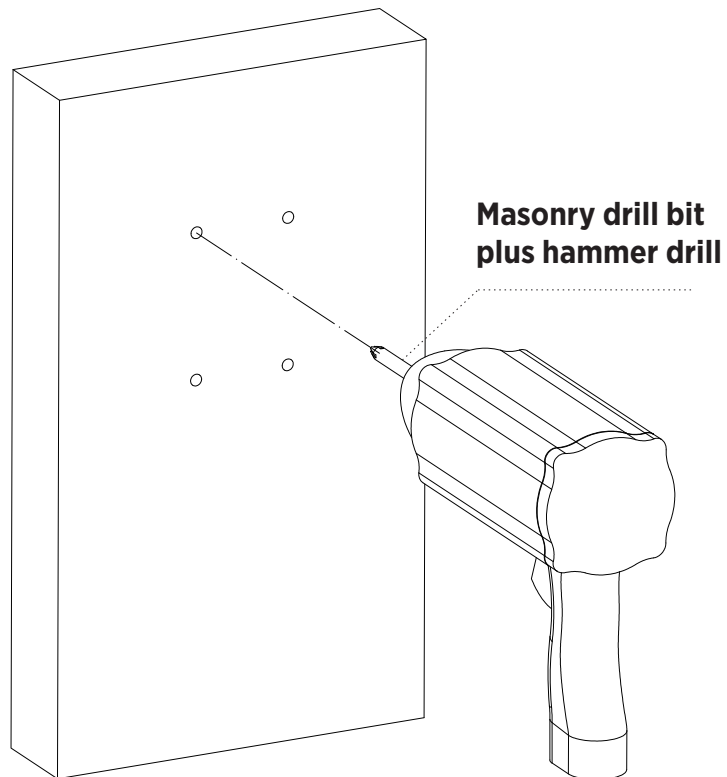
**Step 1:**  
Push through  
hole plugs.

**Step 2:**  
Using the keybox as a guide,  
mark 4x holes.

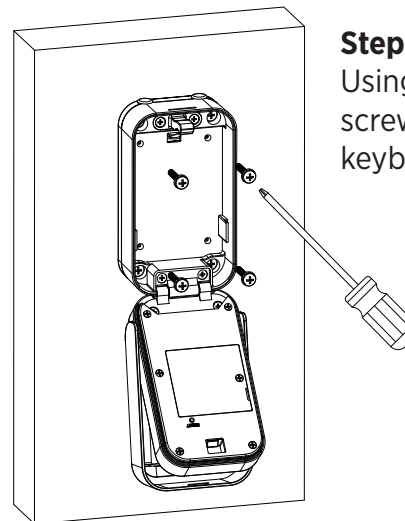


**Step 3:**

Using a masonry drill bit,  
drill 4x 6mm<sup>ø</sup> holes 40mm deep

**Step 4:**

Install 4x wall plugs

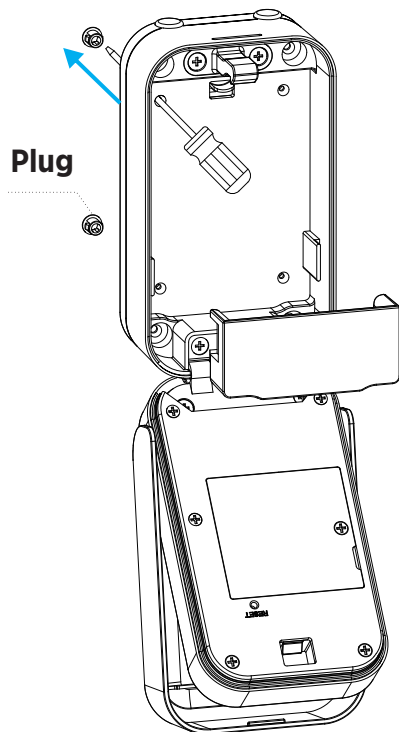
**Step 5:**

Using the 4x supplied  
screws, mount the  
keybox to the wall

## 5: Installation: Wall Mount - Timber

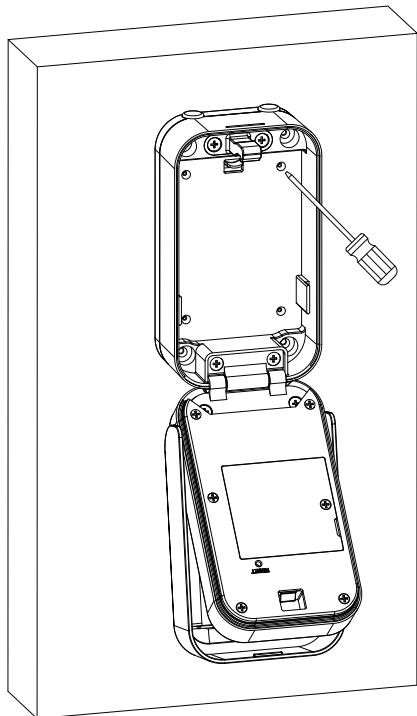
### Step 1:

Push through hole plugs.



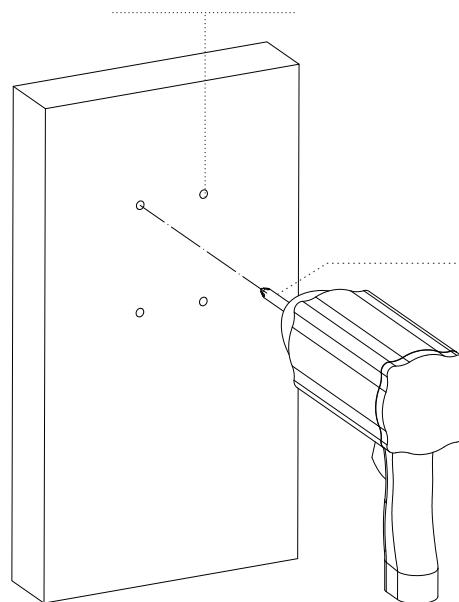
### Step 2:

Using the keybox as a guide, mark 4x holes.



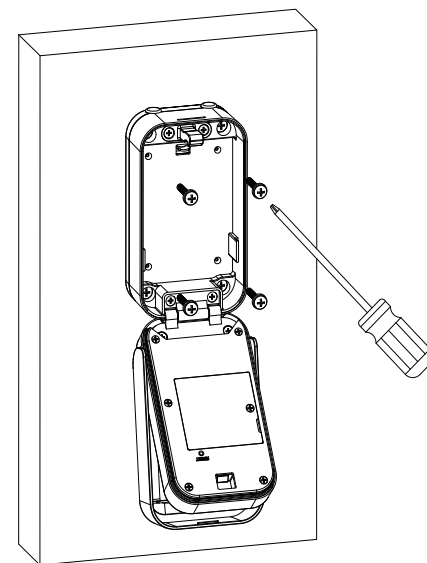
### Step 3:

Drill 4x 3mm<sup>ø</sup> pilot holes 40mm deep



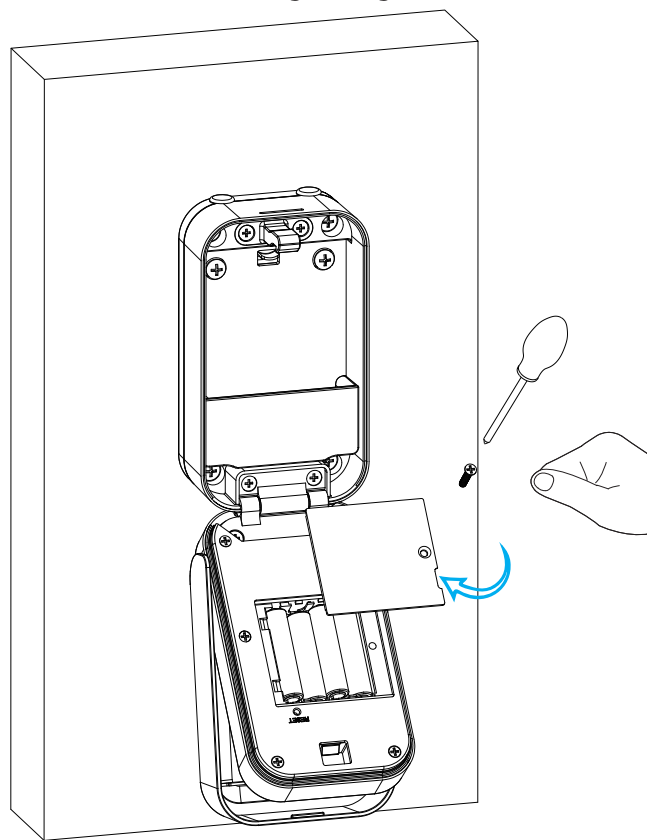
### Step 5:

Using the 4x supplied screws, mount the keybox to the wall



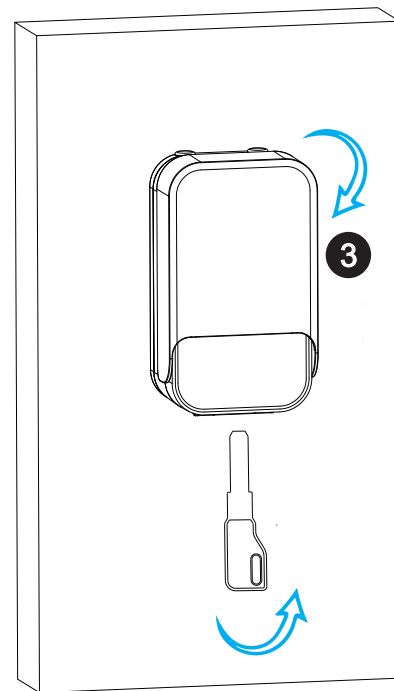
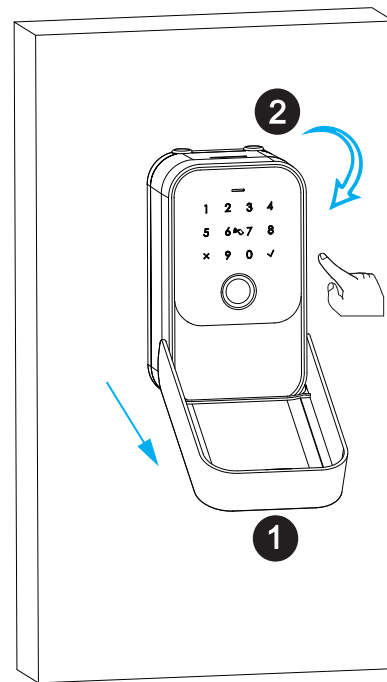
## 5: Battery Installation

Remove the battery cover and install 4x AAA Alkaline Batteries, we recommend using Energizer Max Plus Batteries



## 5: Functional Test

- Open protection cover follow the arrow direction.
- Press fingerprint or passcode to unlock the key box.
- Test the key to unlock properly
- Do not leave the override keys inside the key box.

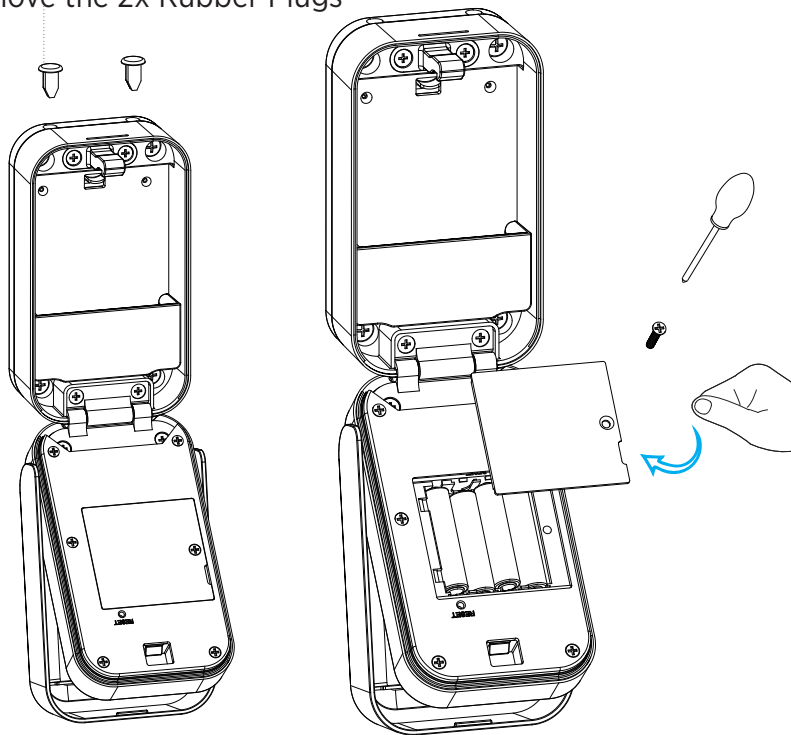




## 5.2: Hanging Keybox

### Step 1:

Remove the 2x Rubber Plugs

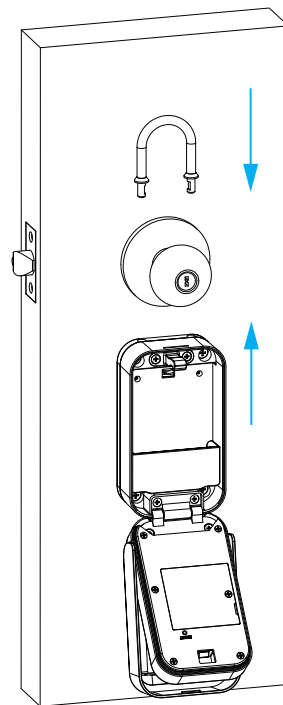


### Step 2:

Remove the battery cover and install 4x AAA Alkaline Batteries, we recommend using Energizer Max Plus Batteries

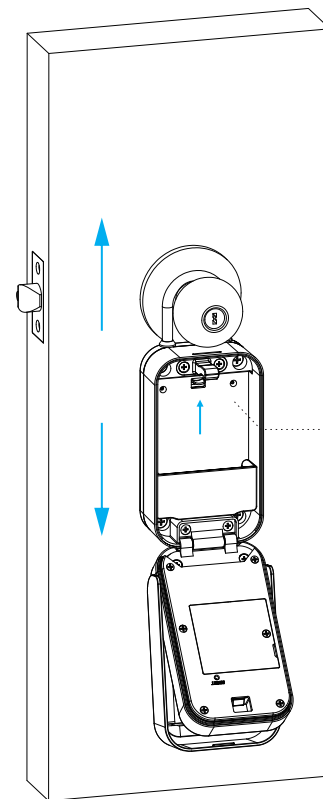
### Step 3:

Slide the shackle over the neck of the knob and lock into the keybox as shown below



### Step 4:

To remove: Push the unlock button hard upwards, and detach the keybox from the shackle

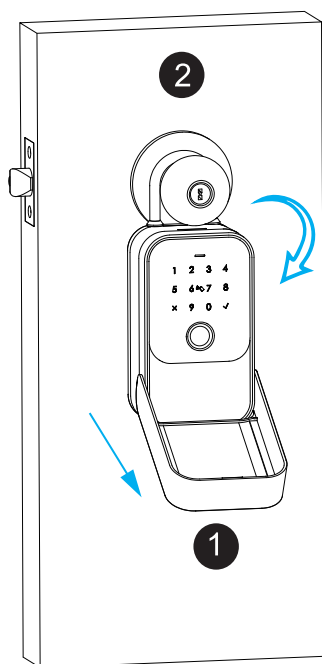


**Unlock button**

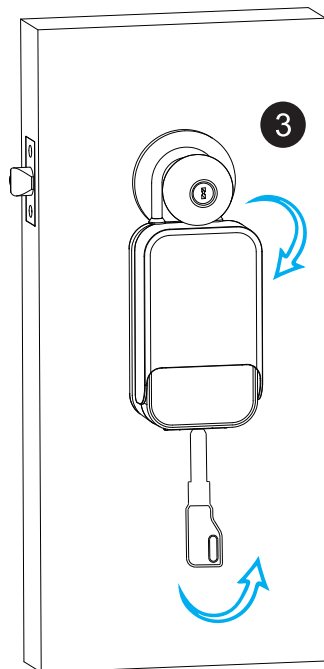
Push the unlock button hard upwards.

## 5.2: Functional Test

- Open protection cover follow the arrow direction.
- Press fingerprint or passcode to unlock the key box.



- Test the key to unlock properly
- Do not leave the override keys inside the keybox.



## 6 TTLOCK APP Settings

Please download the TTLOCK on Apple store or Google play. also you can scan the QR code below to download the APP directly.

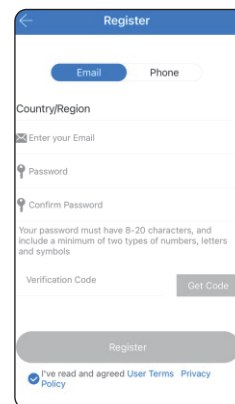


GET IT ON  
Google Play

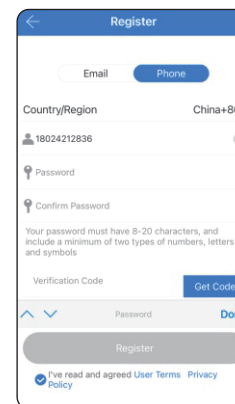


Download on the  
App Store

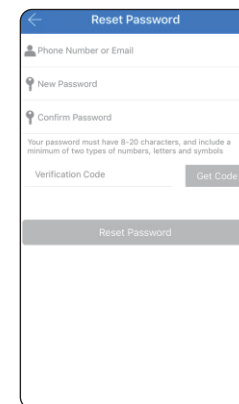
### 6.1 Register: Please register one account with your E-mail or mobile number.



6.1.1 Sign up and Register with mobile or Email



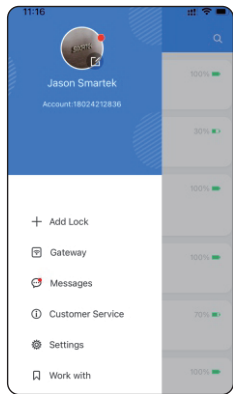
6.1.2 Enter mobile or mail Login with right password



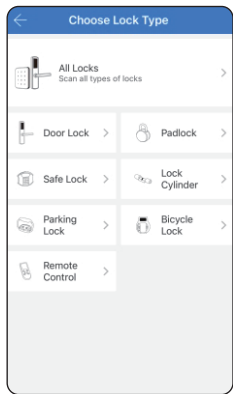
6.1.3 You can reset your password

# Configure the Lock

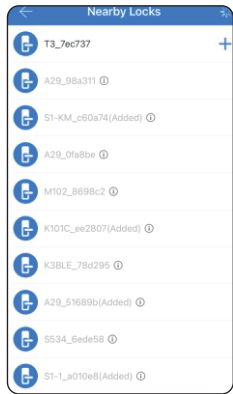
Please run the TTLOCK APP and click “**Add LOCK**” on the left side of system setting and follow th steps to configure the lock with APP:



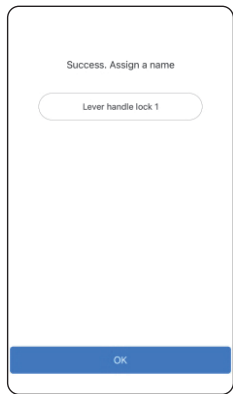
Step 1  
Add Lock



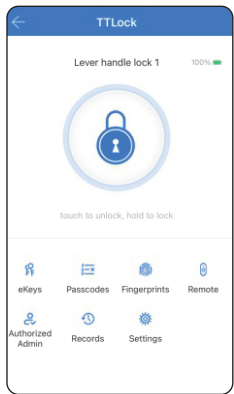
Step 2  
Click “All Locks”



Step 3  
Press+  
Choose First Lock



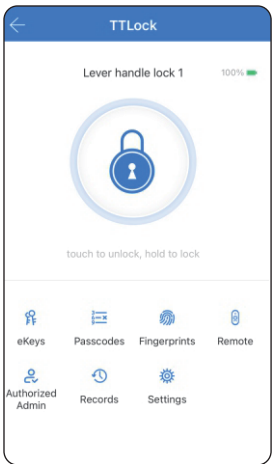
Step 4  
Add Lock Successfully  
Rename the lock



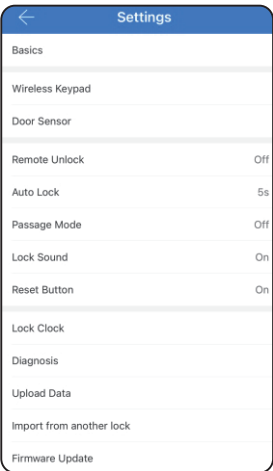
Step 5  
Done

# App Function

Under lock settings, you can see the features for the smart locks, such as eKeys /IC card/ Fingerprint/Remote Unlockunlock records and settings etc.

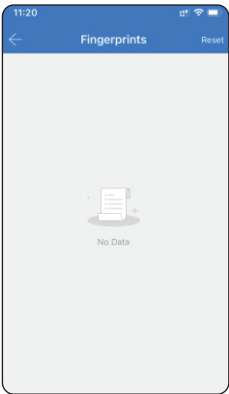


There are many special features under the TTLOCK APP settings. you can make the setting according to your daily requirement.

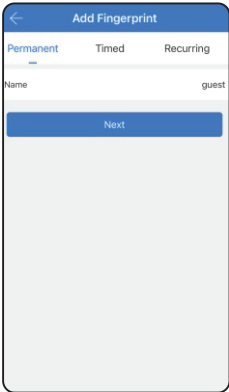


# Add Fingerprint

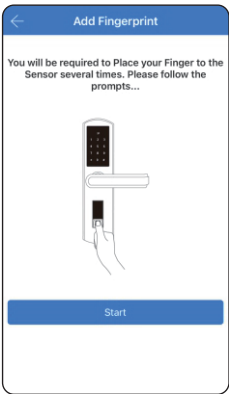
Under the lock setting, you can click the **"Fingerprints"** and add the fingerprint. There is permanent/timed and recurring fingerprint for different condition.



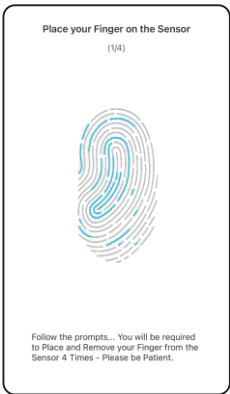
**Step 1**  
Add Fingerprint



**Step 2**  
Choose Permanent Type



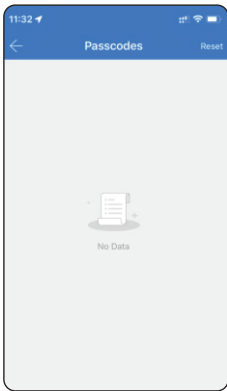
**Step 3**  
Click Start



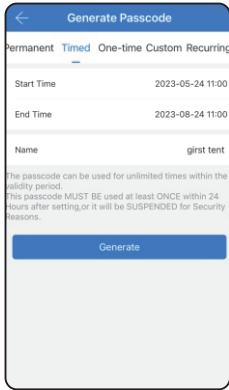
**Step 4**  
Press fingerprint 4 times

# Add User Passcode

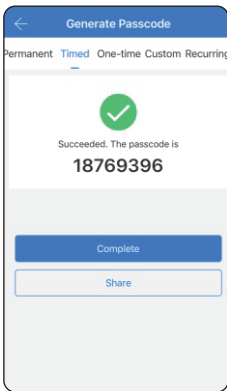
Under the lock setting, you can click the option **"Passcodes"** and add the passcodes. There is permanent /timed and recurring passcodes for different condition.



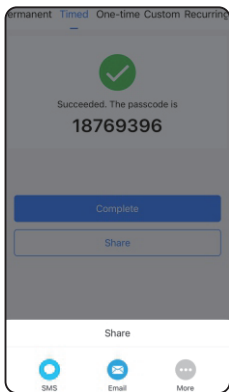
**Step 1**  
Add Passcode



**Step 2**  
Choose Timed Type

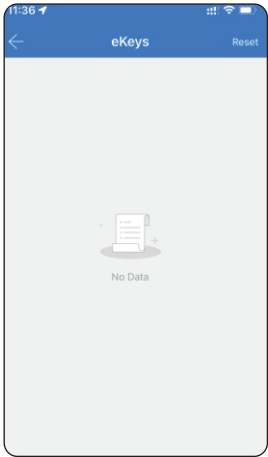


**Step 3**  
Generate Passcode



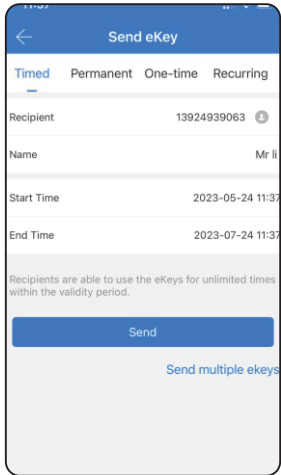
**Step 4**  
Share by SMS or Email

# Add eKeys

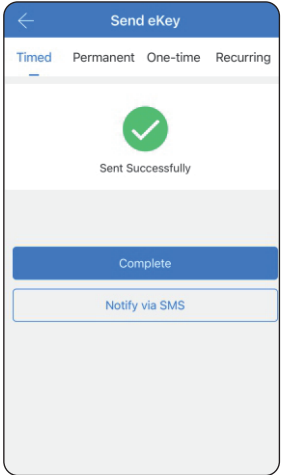


Under the lock setting, you can click the option “eKeys” and issue the eKey to other recipient. There is permanent /timed and recurring eKeys for different condition.

Step 1  
Send eKey



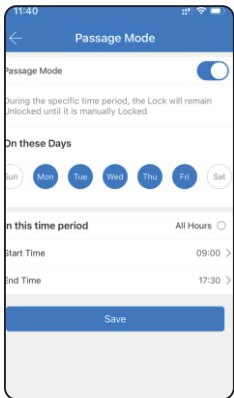
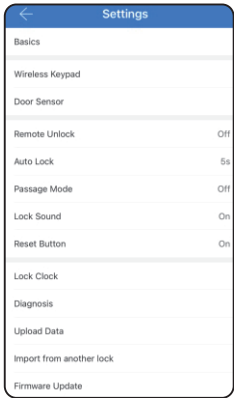
Step 2  
Choose Timed Type



Step 3  
Complete, you can share with SMS to recipient

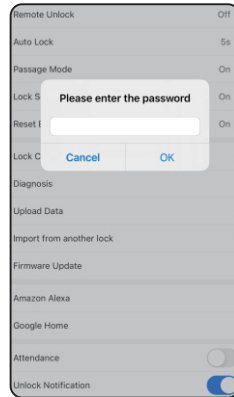
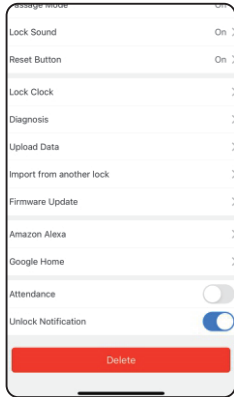
# Passage Mode

Under the lock setting, you can tick “Passage Mode”, under this setting the lock will be in always open state, you can disable the passage mode in the APP too.



# Reset the Lock

Under Lock Settings, you can click the "Delete" button to enter the administrator password reset, the lock will be set to the factory state, you can unlock the keybox with the password: 123456✓



# Remote Unlock Function(with Gateway)

The Wi-Fi gateway is a must to enable the remote unlock function, please refer the parameters below:

- Model: **G2**
- Dimension: 70x70x26mm
- Network: Wi-Fi 2.4G
- IEEE Standard: 802.11b/g/n
- Power Interface: Type C USB
- Power Input: DC5v/500mA

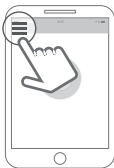
## Light Status



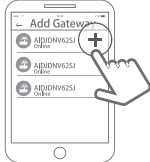
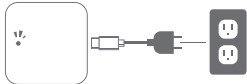
- When the gateway is power on:
  - Light flashes alternately with red and blue;
  - Stand by mode, ready for connection.
  - Blue light: working mode
  - Red light: network failure

## Pair the Gateway with APP

- 1 Activate the App on mobile
- 2 Press the button “≡”
- 3 Select the [Gateway]



- 4 Select [G2]
- 5 Plug the gateway and power on it, when the light flashes alternately with red and blue
- 6 Press the “+”



- 7 Add Gateway
- 8 Select WiFi and enter password

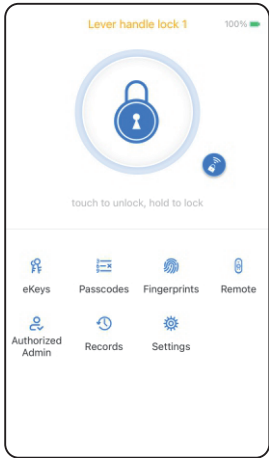
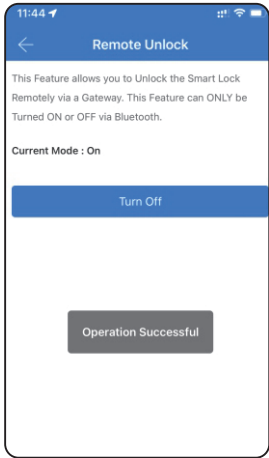


- 9 Finish paring gateway

**⚠ Important! If unsuccessful, power off and power on the gateway.**

## Remote Unlock

Under the lock setting, turn on the remote unlock function as below, then click the unlock sign near the round circle, now press unlock and the door will unlock remotely.



## 9. Troubleshoot and Solution(FAQ)

### Question 1:

#### Can I unlock the key box with my fingerprint at first time?

Answer: After you finish the installation and power on the lock with 4pcs AAA alkaline battery and you can press any fingerprint to unlock the key box, to ensure you can access the key box before you configure the lock with mobile APP.

### Question 2:

#### What kind of battery shall we use?

Answer: This lock is highly recommended to be powered on by 4pcs AAA alkaline battery (We recommend Energizer max Plus), do not use any other batteries or other Zn/Mn batteries!

### Question 3:

#### Is the lock auto locked?

Answer: After you unlock the key box one time, the key box will wait for the lock after 5 seconds, close the "Front-panel" to lock.

### Question 4:

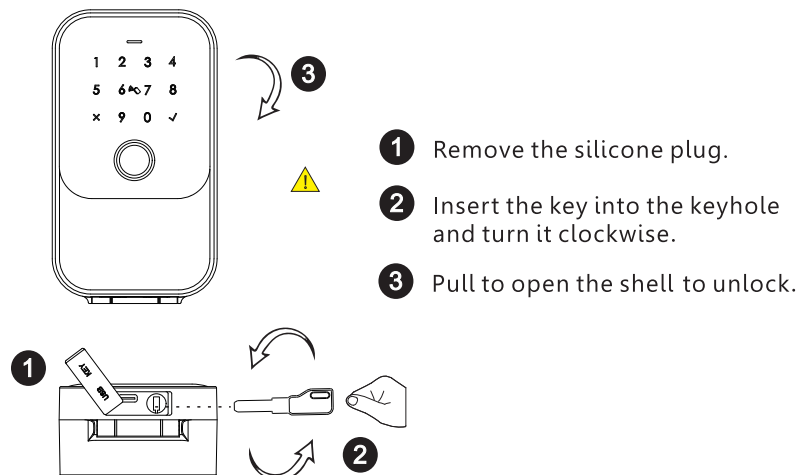
#### I bought one lock for my friend, how can he add the lock with his mobile?

Answer: Please remove this device from your mobile App you can click the "Delete" to reset the lock or hardware reset the lock refer to page 5 for details.

### Question 5:

#### I insert the manual key and turn but I can not unlock the key box.

Answer: Please insert the manual key and Turn clockwise and lift open the front face on the box, see below:



### Question 6:

#### Is it possible to remotely unlock my door key box?

Answer: By adding a Sylvan SLG02 remote gateway (sold separately) and installing on a 2.4ghz WiFi connection, remote unlocking can be done. Please refer to page 25 for setup instructions.